

Better efficiency for Flue Gas Desulphurization

Made of SiC

Bi-directional slurry spray nozzle

TWAA Series

Features

- High wear-resistance
- Small droplet diameter
- Even spray distribution
- Large free passage diameter

Wear-resistant, Lightweight

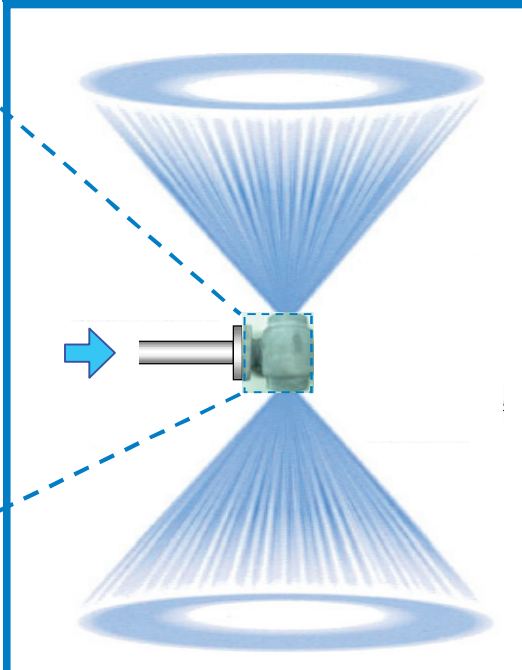


Material: SiC

SiC

(Silicon nitride bonded silicon carbide) has excellent wear-resistance and chemical durability. It is also lightweight. (Weighs less than half weight of stainless steel)

Bi-directional spray



The TWAA series is **bi-directional**, so one nozzle unit can take the place of two. The result, simpler equipment layout, less maintenance yields time savings.

Smaller droplets



With 2 orifices, the flow normally sent through 1 orifice is halved, yielding smaller droplets. Best for applications with contact / reactions.

Results!

Reliable continuous operation

Wear-resistance

Easy-maintenance

Wear-resistance, Lightweight, Bi-directional (Fewer nozzles)

Simpler layout

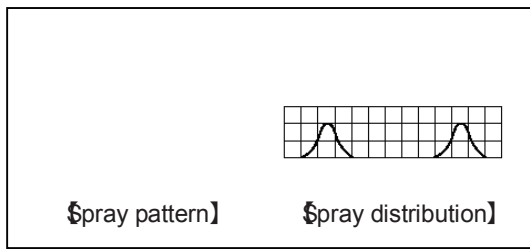
Lightweight, Bi-directional spray



SELECT SPRAY

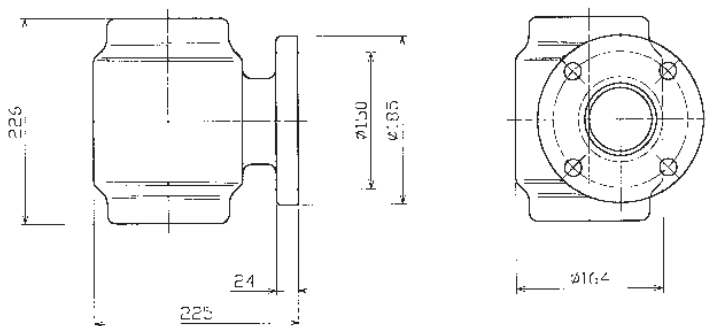
by surface

Performance




Standard pressure : 0.07MPa
 Range of flow rates : 200 - 1,200 L/min
 Flange sizes : 2T - 4T

Reference drawing



At left is a reference drawing for the 3 inch size. For more detail, please contact your nearest distributor, listed below. After a consultation on your specific needs, we can provide information best suited for you.

Flue Gas Desulphurization nozzles

Moderate flow rate alumina hollow cone spray nozzle AP-AL92 series (Alumina ceramic)	Large flow rate flanged hollow cone spray nozzle TAA series (Made of SiC, single direction)	Large flow rate flanged hollow cone spray nozzle TAA series (Made of plastic, single direction)
		

Please feel free to contact our local sales office for any question or inquiry.



SELECT SPRAY
 _____ by surface

SELECT SPRAY

Celsiusstraat 16
 2652 XT Berkel en Rodenrijs

+31(0)10-437 48 88
www.selectspray.com