

UAC

HOW TO CREATE THE COMPLETE CODE

SERIES	Size available (mm)					Capacity code	Mat.	Spray coverage					Thread dimension					Connection			Capacity at different pressures (bar)					WR					
	A	B	C	D	E			180° up	180° down	270° up	270° down	360°	100° lat	RF					Clip / Welded	Threaded	Clip-on	Welded	0,5	1,0	1,0		2,0	3,0			
	(Clip)	a	b	c	d			1/8"	1/4"	3/8"	1/2"	3/4"	1"	1-1/4"	BSPP	NPT	l/min	m³/h					l/min	l/min	l/min						
D1	30	40	50	65	90																										
H	40	53	65	85	110																										
a	8	9,5	11,5	15	19																										
b	16	21	23	30	38																										
Dz	2,2	2,5	2,5	2,8	3,3																										

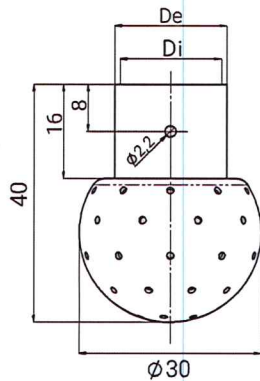
Complete code **UAC C072 B31DEG**

Series **UAC** Fixed spray head
 Size **C** Diameter 50 mm
 Capacity code **072** 7,2 [m³/h] @ 1 bar
 Material **B31** AISI 316L
 Spray coverage **D** 270° down
 Thread dimension **E** 3/4"
 Connection **G** BSPP

CLIP-ON AND WELDED CONNECTION SIZE

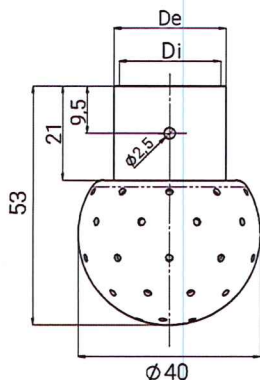
In 2016, Standard DIN 11866 gathered some of the most important standards regarding inox pipes. Some of our products can already couple to pipes respondent to these standards. Pipes with dimensions in compliance with obsolete standards are very common, therefore they are still produced without problems by PNR Italia. We are also available to guarantee the connection with every pipe that has a thickness within the standard values.

In the following table you can find the dimension we can provide.



Type A Ø30mm

	CLIP-ON		WELDED	
	(De x Di)	Pipe	(De x Di)	Pipe
A	Ø 20 x 18	/	/	/
B	Ø 22 x 20	/	Ø 13,7 x 9,2	ASTM A 213 1/4" 40S
C	Ø 14,5 x 12,5	DN10 - DIN 11850/1	Ø 17,1 x 12,4	ASTM A 213 3/8" 40S
D	Ø 15,5 x 13,5	DN10 - DIN 11886/A	Ø 12 x 10	DN10 - DIN 11886/1
E	Ø 20,5 x 18,5	/	Ø 13 x 10	DN10 - DIN 11886/A
F	Ø 16,2 x 14,2	ASTM A 213 1/4"	Ø 18 x 16	DN15 - DIN 11850/1
J	Ø 19,6 x 17,6	ASTM A 213 3/8"	Ø 19 x 16	DN15 - DIN 11886/A
H	Ø 12 x 10	DN10 - DIN 11886/C	Ø 6,35 x 4,55	DN8 - DIN 11886/C



Type B Ø40mm

	CLIP-ON		WELDED	
	(De x Di)	Pipe	(De x Di)	Pipe
A	Ø 20 x 18	/	Ø 18 x 16	DN15 - DIN 11850/1
B	Ø 22 x 20	/	Ø 19 x 17	DN15 - DIN 11886/A
C	Ø 24,5 x 22,5	DN10 - DIN 11850/1	Ø 17,1 x 12,4	ASTM A 213 3/8" 40S
D	Ø 25,5 x 23,5	DN20 - DIN 11886/A	Ø 21,3 x 15,8	ASTM A 213 1/2" 40S
E	Ø 16,2 x 14,2	ASTM A 213 1/4"	Ø 22 x 20	DN20 - DIN 11850/1
F	Ø 19,6 x 17,6	ASTM A 213 3/8"	Ø 23 x 20	DN20 - DIN 11886/A
G	Ø 23,8 x 21,8	DN15 - DIN 11886/B	Ø 25,4 x 22,2	DN25 - DIN 11886/C