

**FB4 - FB4LC - MB4**  
**CONO PIENO SEZIONE QUADRATA**  
**NORMAL SQUARE FULL ONE**  
**CONO LLENO ASPERSIÓN CUADRADA**



**Caratteristiche**

Ugelli a corpo unico o in fusione tipo F-B4 (1).

**Characteristics**

One piece nozzles or F-B4 (1) cast types.

**Características**

Boquilla de cuerpo único o en fusión como tipo F-B4 (1)

**Applicazioni**

- Installazioni con molti ugelli dove la sezione quadrata dello spruzzo permette una copertura migliore della superficie da trattare.

**Applications**

- Installations with many nozzles in which the square spray allows a better surface coverage.

**Aplicaciones**

- Instalación con un gran número de boquillas, donde la sección cuadrada de la pulverización permite una mejor cobertura de la superficie a tratar.

**Materiali**

Ottone, Aisi303, Aisi316L, altri su richiesta.

**Materials**

Brass, SS303, SS316L, other on request.

**Materiales**

Latón, Aisi303, Aisi316L, otros bajo pedido.

**Dimensions (mm) FB4**

| Connection | D    | L    |
|------------|------|------|
| 3/4"       | 32,0 | 55,0 |
| 1"         | 38,0 | 70,0 |

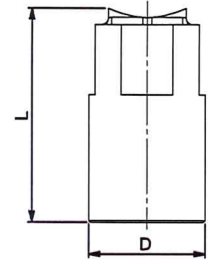
**Dimensions (mm) FB4LC**

| Connection | D    | L     |
|------------|------|-------|
| 1"-1/4     | 53,0 | 90,0  |
| 1"-1/2     | 58,0 | 102,0 |
| 2          | 75,0 | 135,0 |
| 2"-1/2     | 86,0 | 175,0 |

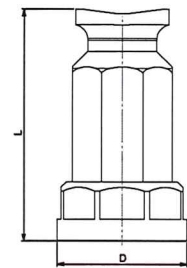
**Dimensions (mm) MB4**

| Connection | D    | L    |
|------------|------|------|
| 1/4"       | 13,0 | 23,0 |
| 3/8"       | 17,0 | 30,0 |
| 1/2"       | 21,0 | 39,0 |
| 3/4"       | 27,0 | 40,0 |
| 1"         | 35,0 | 52,0 |

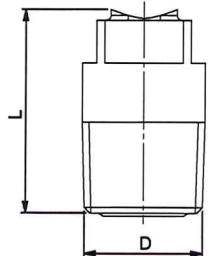
**FB4**



**FB4LC (LARGE CAPACITY)**



**MB4**



| Connection | Flow Factor | Models/Connections |       |      | Dia. (mm) | Min. Dia. (mm) | US (gpm at 40 psi) | Pressure (Bar) |        |        |        |        |        |        |          | Angle <sup>°</sup><br>3 Bar |
|------------|-------------|--------------------|-------|------|-----------|----------------|--------------------|----------------|--------|--------|--------|--------|--------|--------|----------|-----------------------------|
|            |             | Female             |       | Male |           |                |                    | 0,5            | 1      | 2      | 3      | 4      | 6      | 8      | 10       |                             |
|            |             | FB4                | FB4LC | MB4  |           |                |                    | Capacity (Lpm) |        |        |        |        |        |        |          |                             |
| 1/4"       | 14          |                    |       | •    | 3,6       | 1,6            | 2,53               | 4,08           | 5,77   | 8,16   | 10,00  | 11,55  | 14,14  | 16,33  | 18,26    | 100                         |
| 3/8"       | 20          |                    |       | •    | 4,4       | 2,4            | 3,67               | 5,92           | 8,37   | 11,84  | 14,50  | 16,74  | 20,51  | 23,68  | 26,47    | 110                         |
| 1/2"       | 35          |                    |       | •    | 5,9       | 3,2            | 6,31               | 10,17          | 14,38  | 20,33  | 24,90  | 28,75  | 35,21  | 40,66  | 45,46    | 110                         |
| 3/4"       | 71          | •                  |       | •    | 9,8       | 4,4            | 12,64              | 20,37          | 28,81  | 40,74  | 49,90  | 57,62  | 70,57  | 81,49  | 91,10    | 110                         |
| 1"         | 130         | •                  |       | •    | 13,1      | 5,6            | 23,56              | 37,97          | 53,69  | 75,93  | 93,00  | 107,39 | 131,52 | 151,87 | 169,79   | 110                         |
| 1-1/4"     | 190         |                    | •     |      | 15,5      | 5,6            | 34,20              | 55,11          | 77,94  | 110,23 | 135,00 | 155,88 | 190,92 | 220,45 | 246,48   | 110                         |
| 1-1/2"     | 290         |                    | •     |      | 18,2      | 8              | 50,92              | 82,06          | 116,05 | 164,12 | 201,00 | 232,09 | 284,26 | 328,23 | 366,97   | 110                         |
| 2"         | 560         |                    | •     |      | 25        | 11,2           | 99,81              | 160,85         | 227,48 | 321,70 | 394,00 | 454,95 | 557,20 | 643,40 | 719,34   | 110                         |
| 2-1/2"     | 830         |                    | •     |      | 31,8      | 14,4           | 149,46             | 240,87         | 340,64 | 481,73 | 590,00 | 681,27 | 834,39 | 963,47 | 1.077,19 | 110                         |